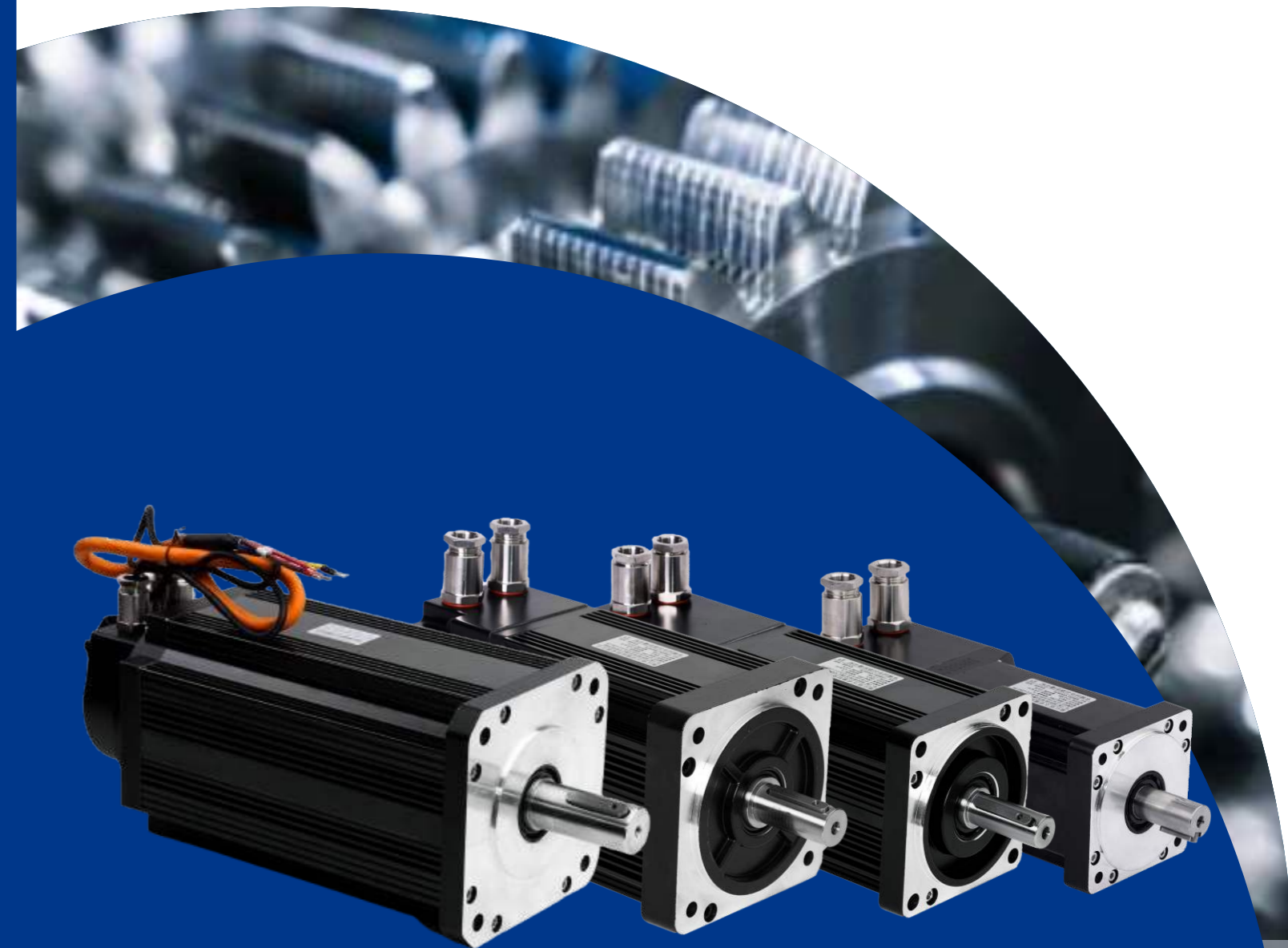


**F SERIES / B5 SERIES
EXPLOSION-PROOF
SERVO MOTOR**



TORQUEBANK TECHNOLOGY CO.,LTD

Dongzhou Industrial Function Zone, Fuyang District, Hangzhou, China

info@torquebank.com

WWW.TORQUEBANK.COM

NAMING RULES

F series explosion-proof permanent magnet synchronous AC servo motor model

The motor model is set according to the following rules:

215	F	ST	—	J2	480	20	HB	Z
①	②	③		④	⑤	⑥	⑦	⑧

① Motor mounting hole indexing circle size:
70 indicates that the indexing return size of mounting holes is 70mm, 75 indicates that the indexing diagram size of mounting holes is 75mm, 100 indicates that the indexing circle size of mounting holes is 100mm, 130 indicates that the indexing circle size of mounting holes is 130mm, 165 indicates that the indexing circle size of mounting holes is 165mm, and 215 indicates that the indexing circle size of mounting holes is 215mm.

② Motor series: F means explosion-proof series;

③ positive basalt drive;

④ encoder:

Code	Encoder	Code	Encoder
C	Magnetic knitting incremental	J5	26 bit optical encoder
M	Optical braid incremental		
S	Wire-saving		
J	17-bit optical knitting absolute value		
JC	Absolute value of 17-bit magnetic braided single turn		
JD	17-bit magnetic braided multiturn absolute value		
J2	23-bit optical braid absolute value		
X	Rotary encoder		
J4	25-bit optical braid absolute value		

⑤ Motor rated torque:
006 means 0.6Nm, 013 means 1.3Nm, 019 means 1.91Nm, 024 means 2.4Nm, 035 means 3.5Nm, 040 means 4Nm, 050 means 5Nm, 060 means 6Nm, 077 means 7.7Nm, 100 means 10Nm, 150 means 15Nm, 170 means 17Nm, 190 means 19Nm, 215 means 21.5Nm, 480 means 48Nm, and so on.

⑥ The rated speed of the motor: 10 means 1000 RPM, 15 means 1500 RPM, 20 means 2000 RPM, 25 means 2500 RPM, 30 means 3000 RPM;

⑦ Voltage level: LB means 220V, IB means 110V, QB means 72V, SB means 48V, TB means 24V. HB stands for 380V;

⑧ Loss of power brake (holding brake) : Z means loss of power brake, omit means no loss of power brake; Motor brake To hold the brake.

NAMING RULES

B5 series explosion-proof permanent magnet synchronous AC servo motor model

The motor model is set according to the following rules:

80	B5	ST	—	C	024	30	LB	Z
①	②	③		④	⑤	⑥	⑦	⑧

① Motor base number:
60 indicates the length and width of the end cover 60*60mm, 90 indicates the length and width of the end cover 90*90mm, 110 indicates the length and width of the end cover 110*110mm, 130 indicates the length and width of the end cover 130*130mm, 180 indicates the length and width of the end cover 180*180mm.

② Motor series: B5 means explosion-proof series;

③ positive basalt drive;

④ encoder:

Code	Encoder	Code	Encoder
C	Magnetic knitting incremental	J5	26 bit optical encoder
M	Optical braid incremental		
S	Wire-saving		
J	17-bit optical knitting absolute value		
JC	Absolute value of 17-bit magnetic braided single turn		
JD	17-bit magnetic braided multiturn absolute value		
J2	23-bit optical braid absolute value		
X	Rotary encoder		
J4	25-bit optical braid absolute value		

⑤ Motor rated torque:
0063 means 0.63Nm, 01330 means 1.27Nm, 01930 means 1.91Nm, 024 stands for 2.4Nm, 035 stands for 3.5Nm, 040 stands for 4Nm, 050 stands for 5Nm, 060 stands for 6Nm, 077 stands for 7.7Nm, 100 stands for 10Nm, 150 stands for 15Nm, 170 stands for 17Nm, 190 stands for 19Nm, 215 stands for 21.5Nm. 480 means 48Nm, and so on;

⑥ The rated motor speed: 10 means 1000 RPM, 15 means 1500 RPM, 20 means 2000 RPM, 25 means 2500 RPM, 30 means 3000 RPM.

⑦ Voltage level: LB means 220V, IB means 110V, QB means 72V, SB means 48V, TB means 24V. HB stands for 380V;

⑧ Loss of power brake (holding brake) : Z means with loss of power brake, omit means no loss of power brake.

Product Contents

F series explosion-proof servo motor

04-12	F70ST	04
	F75ST	05
	F100ST	06
	F130ST	07
	F165ST	08
	F215ST 2	11

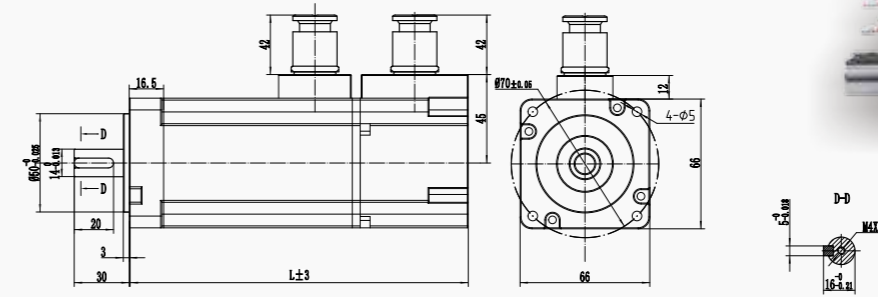
B5 series explosion-proof servo motor

13-18	60B5ST	13
	90B5ST	14
	110B5ST	15
	130B5ST	16
	180B5ST	17

SERIES SERVO MOTORS

70FST

DIMENSION:UNIT=mm



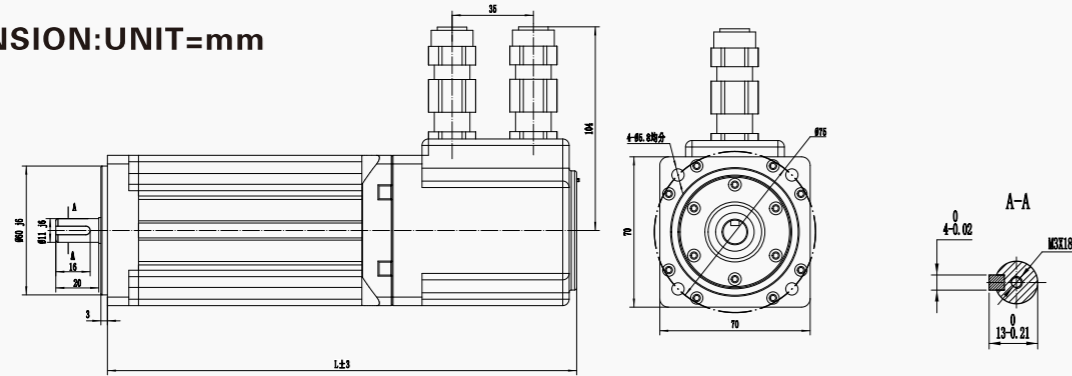
SPECIFICATIONS

MOTER MODEL	70FST-00630	70FST-00660	70FST-01330	70FST-01060	70FST-01930	70FST-01560
Rated Voltage(V)	220	380	220	380	220	380
Rated Power(kW)	200	370	400	630	600	940
Rated Speed(rpm)	3000	6000	3000	6000	3000	6000
Maximum speed(rpm)	6000	8000	6000	8000	6000	8000
Rated Torque(N.m)	0.637	0.6	1.27	1.01	1.91	1.5
Peak Torque(N.m)	1.91	1.91	3.81	3.81	5.73	5.73
Rated Current (A)	1.2	1.13	2.8	2.2	3.5	2.7
Peak Current (A)	3.6	3.6	8.4	8.4	10.5	10.5
Rotor Inertia (kg·m ²)	0.175*10 ⁻⁴	0.175*10 ⁻⁴	0.29*10 ⁻⁴	0.29*10 ⁻⁴	0.39*10 ⁻⁴	0.39*10 ⁻⁴
Winding Resistance at 20°C (Ω)	0.177*10 ⁻⁴	0.177*10 ⁻⁴	0.293*10 ⁻⁴	0.293*10 ⁻⁴	0.393*10 ⁻⁴	0.393*10 ⁻⁴
Torque Coefficient (N.m/A)	0.53	0.53	0.45	0.45	0.55	0.55
Back EMF Constant (V/krpm)	30.9	30.9	29.6	29.6	34	34
Winding Resistance at 20°C (Ω)	6.18	6.18	2.35	2.36	1.93	1.93
Winding Inductance at 20°C (mH)	4.74	4.71	14.5	14.5	10.7	10.7
Electrical Time-constant(ms)	1.16	1.16	6.17	6.17	5.5	5.5
Pole Count	4 Pole Pairs	4 Pole Pairs	4 Pole Pairs	4 Pole Pairs	4 Pole Pairs	4 Pole Pairs
Insulation Class	F	F	F	F	F	F
Protection Class	IP65	IP65	IP65	IP65	IP65	IP65
Cooling Method	Natural Cooling	Natural Cooling	Natural Cooling	Natural Cooling	Natural Cooling	Natural Cooling
Motor Mass (kg)	2.1	2.1	2.3	2.3	2.5	2.5
Load Motor Mass (kg)	2.6	2.6	2.8	2.8	3.0	3.0
Motor Length Without Load (mm)	156	156	181	181	209	209
Motor Length With Load (mm)	186	186	211	211	239	239

SERIES SERVO MOTORS

75FST

DIMENSION:UNIT=mm



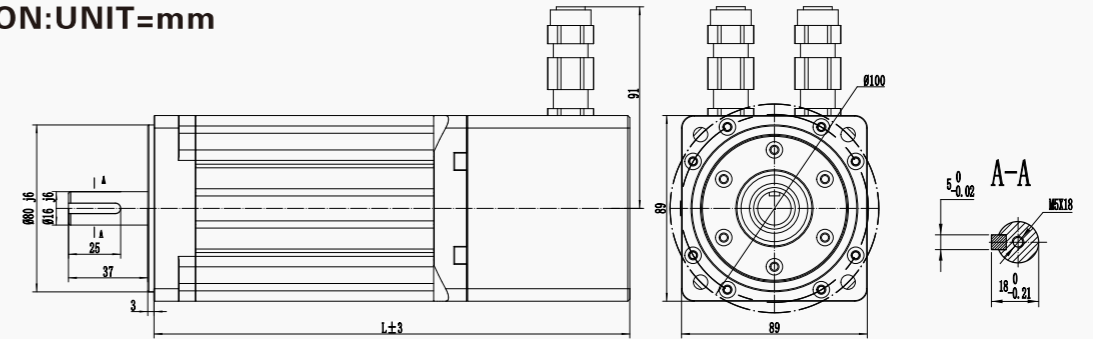
SPECIFICATIONS

MOTER MODEL	75FST-00630	75FST-00660	75FST-01330	75FST-01060	70FST-01930	70FST-01560
Rated Voltage(V)	220	380	220	380	220	380
Rated Power(kW)	200	370	400	630	600	940
Rated Speed(rpm)	3000	6000	3000	6000	3000	6000
Maximum speed(rpm)	6000	8000	6000	8000	6000	8000
Rated Torque(N.m)	0.637	0.6	1.27	1	1.91	1.5
Peak Torque(N.m)	1.91	1.91	3.81	3.81	5.73	5.73
Rated Current (A)	1.2	1.13	2.8	2.2	3.5	2.7
Peak Current (A)	3.6	3.6	8.4	8.4	10.5	10.5
Rotor Inertia (kg·m ²)	0.175*10 ⁻⁴	0.175*10 ⁻⁴	0.29*10 ⁻⁴	0.29*10 ⁻⁴	0.39*10 ⁻⁴	0.39*10 ⁻⁴
Winding Resistance at 20°C (Ω)	0.177*10 ⁻⁴	0.177*10 ⁻⁴	0.293*10 ⁻⁴	0.293*10 ⁻⁴	0.393*10 ⁻⁴	0.393*10 ⁻⁴
Torque Coefficient (N.m/A)	0.53	0.53	0.45	0.45	0.55	0.55
Back EMF Constant (V/krpm)	30.9	30.9	29.6	29.6	34	34
Winding Resistance at 20°C (Ω)	6.18	6.18	2.35	2.36	1.93	1.93
Winding Inductance at 20°C (mH)	4.74	4.74	14.5	14.5	10.7	10.7
Electrical Time-constant(ms)	1.16	1.16	6.17	6.17	5.5	5.5
Pole Count	4 Pole Pairs	4 Pole Pairs	4 Pole Pairs	4 Pole Pairs	4 Pole Pairs	4 Pole Pairs
Insulation Class	F	F	F	F	F	F
Protection Class	IP65	IP65	IP65	IP65	IP65	IP65
Cooling Method	Natural Cooling	Natural Cooling	Natural Cooling	Natural Cooling	Natural Cooling	Natural Cooling
Motor Mass (kg)	2.3	2.3	2.5	2.5	2.7	2.7
Load Motor Mass (kg)	2.8	2.8	3	3.0	3.2	3.2
Motor Length Without Load (mm)	193	193	218	218	246	246
Motor Length With Load (mm)	228	228	253	253	291	291

SERIES SERVO MOTORS

100FST

DIMENSION:UNIT=mm



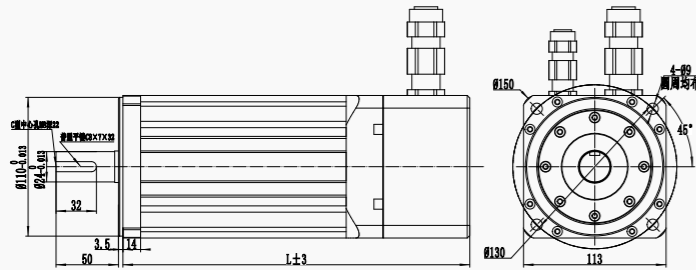
SPECIFICATIONS

MOTER MODEL	100FST-02430	100FST-02060	100FST-03230	100FST-03520	100FST-04025	100FST-03540
Rated Voltage(V)	220	380	220	380	220	380
Rated Power(kW)	750	1250	730	1000	1000	1470
Rated Speed(rpm)	3000	6000	2000	3000	2500	4000
Maximum speed(rpm)	4000	7000	3000	5000	3500	6000
Rated Torque(N.m)	2.39	2	3.5	3.2	4	3.5
Peak Torque(N.m)	7.17	7.17	10.5	10.5	12	12
Rated Current (A)	3	2.51	3	2.73	4.4	3.89
Peak Current (A)	9	9	9	9	13.2	13.2
Rotor Inertia (kg·m ²)	0.182*10 ⁻⁴	0.182*10 ⁻⁴	2.63*10 ⁻⁴	2.63*10 ⁻⁴	2.97*10 ⁻⁴	2.97*10 ⁻⁴
Winding Resistance at 20°C (Ω)	0.193*10 ⁻⁴	0.193*10 ⁻⁴	2.68*10 ⁻⁴	2.68*10 ⁻⁴	3.02*10 ⁻⁴	3.02*10 ⁻⁴
Torque Coefficient (N.m/A)	0.796	0.796	1.17	1.17	0.9	0.9
Back EMF Constant (V/krpm)	48	48	71	71	56	56
Winding Resistance at 20°C (Ω)	2.88	2.88	3.65	3.65	1.83	1.83
Winding Inductance at 20°C (mH)	6.4	6.4	8.8	8.8	4.72	4.72
Electrical Time-constant(ms)	2.22	2.22	2.4	2.4	2.58	2.58
Pole Count	4 Pole Pairs	4 Pole Pairs	4 Pole Pairs	4 Pole Pairs	4 Pole Pairs	4 Pole Pairs
Insulation Class	F	F	F	F	F	F
Protection Class	IP65	IP65	IP65	IP65	IP65	IP65
Cooling Method	Natural Cooling	Natural Cooling	Natural Cooling	Natural Cooling	Natural Cooling	Natural Cooling
Motor Mass (kg)	4.7	4.7	5.1	5.1	5.6	5.6
Load Motor Mass (kg)	5.2	5.2	5.6	5.6	6.1	6.1
Motor Length Without Load (mm)	228	228	256	256	268	268
Motor Length With Load (mm)	258	258	286	286	298	298

SERIES SERVO MOTORS

130FST

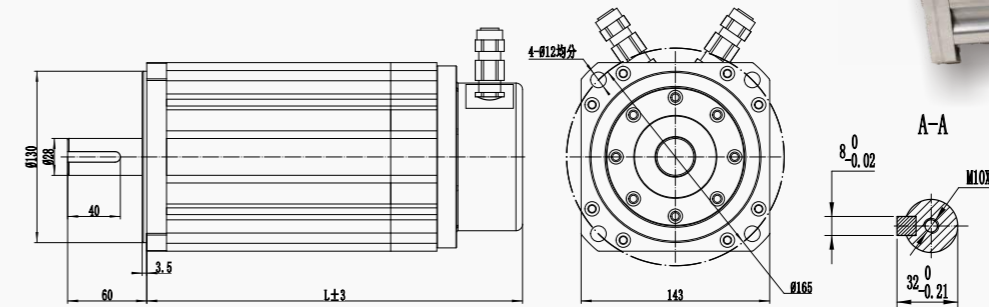
DIMENSION:UNIT=mm



SERIES SERVO MOTORS

165F ST

DIMENSION:UNIT=mm



SPECIFICATIONS

MOTER MODEL	130FST-04030	130FST-03840	130FST-05030	130FST-04540	130FST-06030	130FST-05540
Rated Voltage(V)	220	380	220	380	220	380
Rated Power(kW)	1.2	1.59	1.5	1.88	1.8	2.3
Rated Speed(rpm)	3000	4000	3000	4000	3000	4000
Maximum speed(rpm)	3500	6000	3500	6000	3500	6000
Rated Torque(N.m)	4	3.8	5	4.5	6	5.5
Peak Torque(N.m)	10	10	12.5	12.5	15	15
Rated Current (A)	5	4.75	6	5.42	6	5.5
Peak Current (A)	12.5	12.5	15	15	15	15
Rotor Inertia (kg·m ²)	0.54*10 ⁻³	0.54*10 ⁻³	0.63*10 ⁻³	0.63*10 ⁻³	0.76*10 ⁻³	0.76*10 ⁻³
Winding Resistance at 20°C (Ω)	0.55*10 ⁻³	0.55*10 ⁻³	0.64*10 ⁻³	0.64*10 ⁻³	0.77*10 ⁻³	0.77*10 ⁻³
Torque Coefficient (N.m/A)	0.8	0.8	0.83	0.83	1	1
Back EMF Constant (V/krpm)	54	54	62	62	60	60
Winding Resistance at 20°C (Ω)	1.09	1.09	1.03	1.03	0.81	0.81
Winding Inductance at 20°C (mH)	3.3	3.3	3.43	3.43	2.59	2.59
Electrical Time-constant(ms)	3	3	3.33	3.33	3.2	3.2
Pole Count	4 Pole Pairs	4 Pole Pairs	4 Pole Pairs	4 Pole Pairs	4 Pole Pairs	4 Pole Pairs
Insulation Class	F	F	F	F	F	F
Protection Class	IP65	IP65	IP65	IP65	IP65	IP65
Cooling Method	Natural Cooling	Natural Cooling	Natural Cooling	Natural Cooling	Natural Cooling	Natural Cooling
Motor Mass (kg)	8.7	8.7	9.7	9.7	10.7	10.7
Load Motor Mass (kg)	9.7	9.7	10.7	10.7	11.7	11.7
Motor Length Without Load (mm)	260	260	275	275	290	290
Motor Length With Load (mm)	290	290	305	305	320	320

SPECIFICATIONS

MOTER MODEL	165FST-04025	165FST-03640	165FST-05025	165FST-04640	165FST-06025	165FST-05440
Rated Voltage(V)	220	380	220	380	220	380
Rated Power(kW)	1	1.51	1.3	1.93	1.5	2.26
Rated Speed(rpm)	2500	4000	2500	4000	2500	4000
Maximum speed(rpm)	3000	5000	3000	5000	3000	5000
Rated Torque(N.m)	4	3.6	5	4.6	6	5.4
Peak Torque(N.m)	10	10	12.5	12.5	15	15
Rated Current (A)	4	3.6	5	4.6	6	5.4
Peak Current (A)	10	10	12.5	12.5	15	15
Rotor Inertia (kg·m ²)	0.85*10 ⁻³	0.85*10 ⁻³	1.06*10 ⁻³	1.06*10 ⁻³	1.26*10 ⁻³	1.26*10 ⁻³
Winding Resistance at 20°C (Ω)	0.86*10 ⁻³	0.86*10 ⁻³	1.07*10 ⁻³	1.07*10 ⁻³	1.27*10 ⁻³	1.27*10 ⁻³
Torque Coefficient (N.m/A)	1	1	1	1	1	1
Back EMF Constant (V/krpm)	68	68	68	68	65	65
Winding Resistance at 20°C (Ω)	2.76	2.76	1.84	1.84	1.21	1.21
Winding Inductance at 20°C (mH)	6.42	6.42	4.9	4.9	3.87	3.87
Electrical Time-constant(ms)	2.32	2.32	2.66	2.66	3.26	3.26
Pole Count	4 Pole Pairs	4 Pole Pairs	4 Pole Pairs	4 Pole Pairs	4 Pole Pairs	4 Pole Pairs
Insulation Class	F	F	F	F	F	F
Protection Class	IP65	IP65	IP65	IP65	IP65	IP65
Cooling Method	Natural Cooling	Natural Cooling	Natural Cooling	Natural Cooling	Natural Cooling	Natural Cooling
Motor Mass (kg)	6.2	6.2	6.6	6.6	7.4	7.4
Load Motor Mass (kg)	7.3	7.3	7.7	7.7	8.5	8.5
Motor Length Without Load (mm)	232	232	237	237	245	245
Motor Length With Load (mm)	262	262	267	267	275	275

SERIES SERVO MOTORS

165FST

SPECIFICATIONS

MOTER MODEL	165FST-07725	165FST-07140	165FST-10010	165FST-08715	165FST-10015	165FST-09220
Rated Voltage(V)	220	380	220	380	220	380
Rated Power(kW)	2	2.97	1	1.37	1.5	1.93
Rated Speed(rpm)	2500	4000	1000	1500	1500	2000
Maximum speed(rpm)	3000	5000	1500	2500	2000	3000
Rated Torque(N.m)	7.7	7.1	10	8.7	10	9.2
Peak Torque(N.m)	22	22	20	20	20	20
Rated Current (A)	7.5	6.89	4.5	3.2	6	5.5
Peak Current (A)	21.5	21.5	9	9	15	15
Rotor Inertia (kg·m ²)	1.53*10 ⁻³	1.53*10 ⁻³	1.94*10 ⁻³	1.94*10 ⁻³	1.94*10 ⁻³	1.94*10 ⁻³
Winding Resistance at 20°C (Ω)	1.54*10 ⁻³	1.54*10 ⁻³	1.95*10 ⁻³	1.95*10 ⁻³	1.95*10 ⁻³	1.95*10 ⁻³
Torque Coefficient (N.m/A)	1.03	1.03	2.2	2.2	1.67	1.67
Back EMF Constant (V/krpm)	68	68	140	140	103	103
Winding Resistance at 20°C (Ω)	1.01	1.01	2.7	2.7	1.5	1.5
Winding Inductance at 20°C (mH)	2.94	2.94	8.8	8.8	4.37	4.37
Electrical Time-constant(ms)	2.91	2.91	3.26	3.26	2.91	2.91
Pole Count	4 Pole Pairs	4 Pole Pairs	4 Pole Pairs	4 Pole Pairs	4 Pole Pairs	4 Pole Pairs
Insulation Class	F	F	F	F	F	F
Protection Class	IP65	IP65	IP65	IP65	IP65	IP65
Cooling Method	Natural Cooling	Natural Cooling	Natural Cooling	Natural Cooling	Natural Cooling	Natural Cooling
Motor Mass (kg)	8.3	8.3	10.2	10.2	10.2	10.2
Load Motor Mass (kg)	9.4	9.4	11.3	11.3	11.3	11.3
Motor Length Without Load (mm)	260	260	285	285	285	285
Motor Length With Load (mm)	290	290	315	315	315	315

SERIES SERVO MOTORS

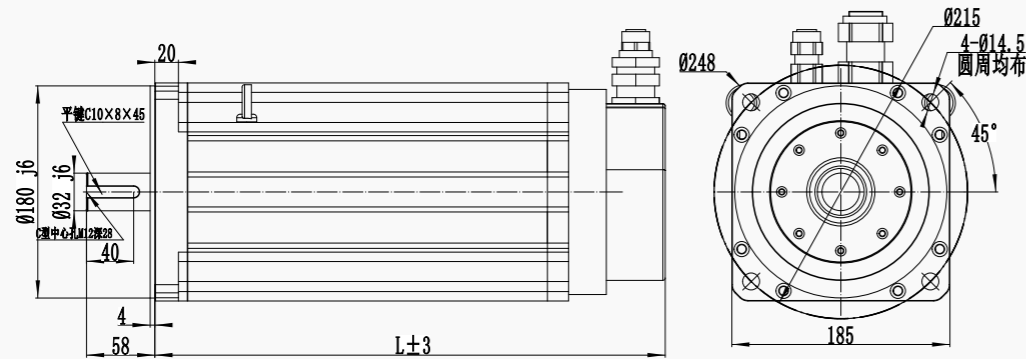
165FST

SPECIFICATIONS

MOTER MODEL	165FST-10025	165FST-09530	165FST-15015	165FST-11520	165FST-15025	165FST-12130
Rated Voltage(V)	220	380	220	380	220	380
Rated Power(kW)	2.6	2.98	2.3	2.4	3.8	3.8
Rated Speed(rpm)	2500	3000	1500	2000	2500	3000
Maximum speed(rpm)	3000	5000	2000	3000	3000	5000
Rated Torque(N.m)	10	9.5	15	11.5	15	12.1
Peak Torque(N.m)	20	20	30	30	30	30
Rated Current (A)	10	9.5	9.5	7.28	13.5	10.9
Peak Current (A)	20	20	19	19	27	27
Rotor Inertia (kg·m ²)	1.94*10 ⁻³	1.94*10 ⁻³	2.77*10 ⁻³	2.77*10 ⁻³	2.71*10 ⁻³	2.71*10 ⁻³
Winding Resistance at 20°C (Ω)	1.95*10 ⁻³	1.95*10 ⁻³	2.78*10 ⁻³	2.78*10 ⁻³	2.72*10 ⁻³	2.72*10 ⁻³
Torque Coefficient (N.m/A)	1	1	1.58	1.58	1.11	1.11
Back EMF Constant (V/krpm)	70	70	114	114	67	67
Winding Resistance at 20°C (Ω)	0.73	0.73	1.1	1.1	0.49	0.49
Winding Inductance at 20°C (mH)	2.45	2.45	4.45	4.45	1.68	1.68
Electrical Time-constant(ms)	3.35	3.35	4.05	4.05	3.43	3.43
Pole Count	4 Pole Pairs	4 Pole Pairs	4 Pole Pairs	4 Pole Pairs	4 Pole Pairs	4 Pole Pairs
Insulation Class	F	F	F	F	F	F
Protection Class	IP65	IP65	IP65	IP65	IP65	IP65
Cooling Method	Natural Cooling	Natural Cooling	Natural Cooling	Natural Cooling	Natural Cooling	Natural Cooling
Motor Mass (kg)	10.2	10.2	12.6	12.6	11.7	11.7
Load Motor Mass (kg)	11.3	11.3	13.7	13.7	12.8	12.8
Motor Length Without Load (mm)	285	285	307	307	297	297
Motor Length With Load (mm)	315	315	337	337	327	327

SERIES SERVO MOTORS

215FST DIMENSION:UNIT=mm



SPECIFICATIONS

MOTER MODEL	215FST-17215	215FST-17215	215FST-19015	215FST-19015	215FST-21520	215FST-21520	215FST-27010	215FST-27010
Rated Voltage(V)	220	380	220	380	220	380	220	380
Rated Power(kW)	2.7	2.7	3	3	4.5	4.5	2.9	2.9
Rated Speed(rpm)	1500	1500	1500	1500	2000	2000	1000	1000
Maximum speed(rpm)	1800	3000	2000	3500	2500	4000	1500	2500
Rated Torque(N.m)	17.2	17.2	19	19	21.5	21.5	27	27
Peak Torque(N.m)	43	43	47	47	53	53	67	67
Rated Current (A)	10.5	10.5	12	12	16	16	12	12
Peak Current (A)	26	26	30	30	39	39	30	30
Rotor Inertia (kg·m ²)	6.5*10 ⁻³	6.5*10 ⁻³	7.0*10 ⁻³	7.0*10 ⁻³	7.96*10 ⁻³	7.96*10 ⁻³	9.64*10 ⁻³	9.64*10 ⁻³
Winding Resistance at 20°C(Ω)	6.6*10 ⁻³	6.6*10 ⁻³	7.1*10 ⁻³	7.1*10 ⁻³	8.1*10 ⁻³	8.1*10 ⁻³	9.75*10 ⁻³	9.75*10 ⁻³
Torque Coefficient (N.m/A)	1.64	1.64	1.58	1.58	1.34	1.34	2.25	2.25
Back EMF Constant (V/krpm)	112	112	97	97	84	84	138	138
Winding Resistance at 20°C(Ω)	0.7	0.7	0.4	0.4	0.24	0.24	0.48	0.48
Winding Inductance at 20°C (mH)	3.5	3.5	2.42	2.42	2.42	2.42	3.26	3.26
Electrical Time-constant(ms)	5	5	6	6	6	6	6.79	6.79
Pole Count	4 Pole Pairs	4 Pole Pairs	4 Pole Pairs	4 Pole Pairs	4 Pole Pairs	4 Pole Pairs	4 Pole Pairs	4 Pole Pairs
Insulation Class	F	F	F	F	F	F	F	F
Protection Class	IP65	IP65	IP65	IP65	IP65	IP65	IP65	IP65
Cooling Method	Natural Cooling	Natural Cooling	Natural Cooling	Natural Cooling	Natural Cooling	Natural Cooling	Natural Cooling	Natural Cooling
Motor Mass (kg)	19.5	19.5	20.5	20.5	22.5	22.5	25.5	25.5
Load Motor Mass (kg)	23.5	23.5	24.5	24.5	26.5	26.5	29.5	29.5
Motor Length Without Load (mm)	313	313	313	313	330	330	349	349
Motor Length With Load (mm)	348	348	348	348	365	365	384	384

SERIES SERVO MOTORS

215FST

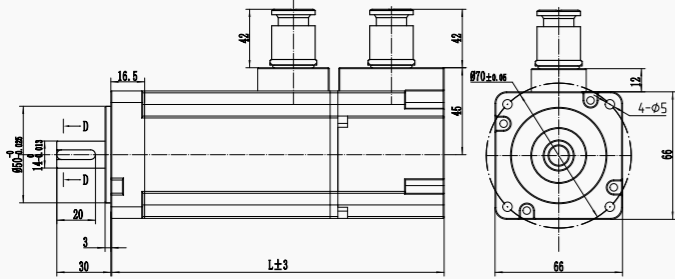
SPECIFICATIONS

MOTER MODEL	215FST-27015	215FST-27015	215FST-35010	215FST-35010	215FST-35015	215FST-35015	215FST-48015	215FST-48015
Rated Voltage(V)	220	380	220	380	220	380	220	380
Rated Power(kW)	4.3	4.3	3.7	3.7	5.5	5.5	7.5	7.5
Rated Speed(rpm)	1500	1500	1000	1000	1500	1500	1500	1500
Maximum speed(rpm)	2000	3000	1500	2500	2000	4000	2000	4000
Rated Torque(N.m)	27	27	35	35	35	35	48	48
Peak Torque(N.m)	67	67	70	70	70	70	96	96
Rated Current (A)	16	16	16	16	24	24	32	32
Peak Current (A)	40	40	32	32	48	48	64	64
Rotor Inertia (kg·m ²)	9.64*10 ⁻³	9.64*10 ⁻³	12.25*10 ⁻³	12.25*10 ⁻³	12.25*10 ⁻³	12.25*10 ⁻³	16.72*10 ⁻³	16.72*10 ⁻³
Winding Resistance at 20°C(Ω)	9.75*10 ⁻³	9.75*10 ⁻³	12.35*10 ⁻³	12.35*10 ⁻³	12.35*10 ⁻³	12.35*10 ⁻³	16.85*10 ⁻³	16.85*10 ⁻³
Torque Coefficient (N.m/A)	1.69	1.69	2.2	2.2	1.45	1.45	1.5	1.5
Back EMF Constant (V/krpm)	103	103	134	134	90	90	94	94
Winding Resistance at 20°C(Ω)	0.28	0.28	0.31	0.31	0.14	0.14	0.104	0.104
Winding Inductance at 20°C (mH)	1.74	1.74	2.11	2.11	1	1	0.77	0.77
Electrical Time-constant(ms)	6.2	6.2	6.8	6.8	7.14	7.14	7.4	7.4
Pole Count	4 Pole Pairs	4 Pole Pairs	4 Pole Pairs	4 Pole Pairs	4 Pole Pairs	4 Pole Pairs	4 Pole Pairs	4 Pole Pairs
Insulation Class	F	F	F	F	F	F	F	F
Protection Class	IP65	IP65	IP65	IP65	IP65	IP65	IP65	IP65
Cooling Method	Natural Cooling	Natural Cooling	Natural Cooling	Natural Cooling	Natural Cooling	Natural Cooling	Natural Cooling	Natural Cooling
Motor Mass (kg)	25.5	25.5	30.5	30.5	30.5	30.5	40	40
Load Motor Mass (kg)	29.5	29.5	34.5	34.5	34.5	34.5	45	45
Motor Length Without Load (mm)	349	349	379	379	379	379	433	433
Motor Length With Load (mm)	384	384	424	424	424	424	478	478

SERIES SERVO MOTORS

60B5ST

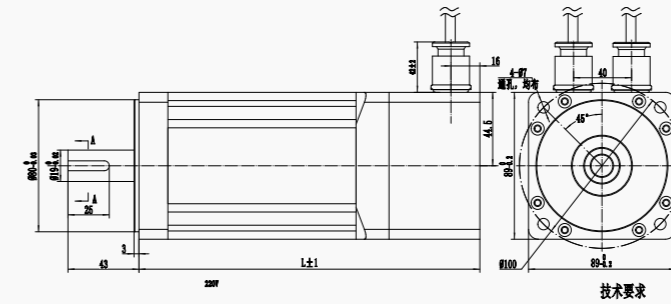
DIMENSION:UNIT=mm



SERIES SERVO MOTORS

90B5ST

DIMENSION:UNIT=mm



SPECIFICATIONS

MOTER MODEL	60B5ST-00630	60B5ST-01330	60B5ST-01930
Rated Voltage(V)	220	220	220
Rated Power(kW)	200	400	600
Rated Speed(rpm)	3000	3000	3000
Maximum speed(rpm)	6000	6000	6000
Rated Torque(N.m)	0.637	1.27	1.91
Peak Torque(N.m)	1.91	3.91	5.73
Rated Current (A)	1.2	2.8	3.5
Peak Current (A)	3.6	8.4	10.5
Rotor Inertia (kg·m ²)	0.175*10 ⁻⁴	0.29*10 ⁻⁴	0.39*10 ⁻⁴
Winding Resistance at 20°C (Ω)	0.178*10 ⁻⁴	0.293*10 ⁻⁴	0.393*10 ⁻⁴
Torque Coefficient (N.m/A)	0.53	0.45	0.55
Back EMF Constant (V/krpm)	30.9	29.6	34
Winding Resistance at 20°C (Ω)	6.18	2.35	1.93
Winding Inductance at 20°C (mH)	29.3	14.5	10.7
Electrical Time-constant(ms)	4.74	6.21	5.5
Pole Count	4 Pole Pairs	4 Pole Pairs	4 Pole Pairs
Insulation Class	F	F	F
Protection Class	IP65	IP65	IP65
Cooling Method	Natural Cooling	Natural Cooling	Natural Cooling
Motor Mass (kg)	2.1	2.3	2.5
Load Motor Mass (kg)	2.6	2.8	3
Motor Length Without Load (mm)	156	181	209
Motor Length With Load (mm)	196	211	239

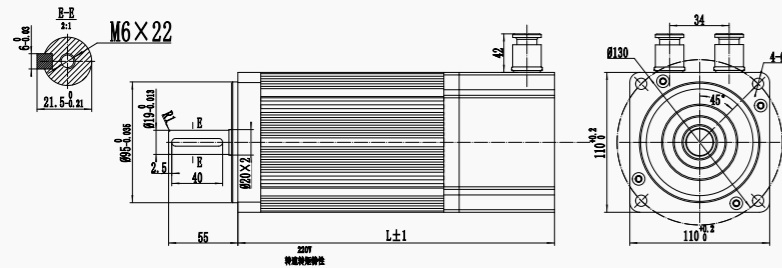
SPECIFICATIONS

MOTER MODEL	90B5ST-01330	90B5ST-02430	90B5ST-03520	90B5ST-03530	90B5ST-04025
Rated Voltage(V)	220	220	220	220	220
Rated Power(kW)	400	750	730	1000	1000
Rated Speed(rpm)	3000	3000	2000	3000	2500
Maximum speed(rpm)	4000	3500	2500	3500	3000
Rated Torque(N.m)	1.27	2.39	3.5	3.5	4
Peak Torque(N.m)	3.8	7.1	10.5	10.5	12
Rated Current (A)	2	3	3	4.5	4.4
Peak Current (A)	6	9	13.5	13.5	13.2
Rotor Inertia (kg·m ²)	1.05*10 ⁻⁴	1.82*10 ⁻⁴	2.63*10 ⁻⁴	2.63*10 ⁻⁴	2.97*10 ⁻⁴
Winding Resistance at 20°C (Ω)	1.1*10 ⁻⁴	1.87*10 ⁻⁴	2.68*10 ⁻⁴	2.68*10 ⁻⁴	3.02*10 ⁻⁴
Torque Coefficient (N.m/A)	0.64	0.78	1.17	0.78	0.9
Back EMF Constant (V/krpm)	40	47	71	47	56
Winding Resistance at 20°C (Ω)	2.88	2.88	3.65	1.58	1.83
Winding Inductance at 20°C (mH)	4.44	6.4	8.8	3.76	4.72
Electrical Time-constant(ms)	7.93	2.22	2.4	2.38	2.56
Pole Count	4 Pole Pairs	4 Pole Pairs	4 Pole Pairs	4 Pole Pairs	4 Pole Pairs
Insulation Class	F	F	F	F	F
Protection Class	IP65	IP65	IP65	IP65	IP65
Cooling Method	Natural Cooling	Natural Cooling	Natural Cooling	Natural Cooling	Natural Cooling
Motor Mass (kg)	4	4.5	4.9	4.9	5.3
Load Motor Mass (kg)	4.5	5	5.4	5.4	5.8
Motor Length Without Load (mm)	209	239	255	255	267
Motor Length With Load (mm)	239	266	286	286	297

SERIES SERVO MOTORS

110B5ST

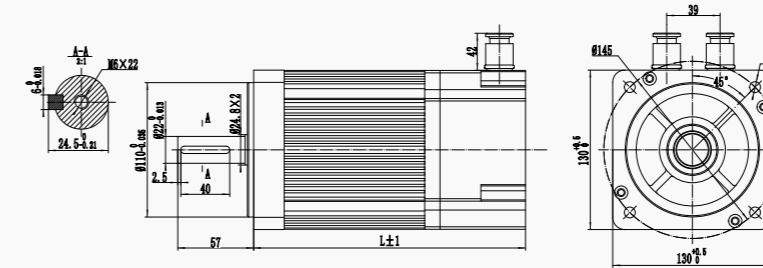
DIMENSION:UNIT=mm



SERIES SERVO MOTORS

130B5ST

DIMENSION:UNIT=mm



SPECIFICATIONS

MOTER MODEL	110B5ST-04020	110B5ST-04030	110B5ST-05030	110B5ST-06030	110B5ST-04025
Rated Voltage(V)	220	220	220	220	220
Rated Power(kW)	0.8	1.2	1.5	1.8	1
Rated Speed(rpm)	2000	3000	3000	3000	2500
Maximum speed(rpm)	2500	3500	3500	3500	2800
Rated Torque(N.m)	4	4	5	6	4
Peak Torque(N.m)	12	12	15	18	12
Rated Current (A)	3.5	5	6	6	4
Peak Current (A)	10.5	15	18	18	12
Rotor Inertia (kg·m ²)	0.54*10 ⁻³	0.54*10 ⁻³	0.63*10 ⁻³	0.76*10 ⁻³	0.85*10 ⁻³
Winding Resistance at 20°C (Ω)	0.56*10 ⁻³	0.56*10 ⁻³	0.65*10 ⁻³	0.77*10 ⁻³	0.87*10 ⁻³
Torque Coefficient (N.m/A)	1.14	0.8	0.83	1	1
Back EMF Constant (V/krpm)	79	54	62	60	72
Winding Resistance at 20°C (Ω)	2.4	1.09	1.03	0.81	2.76
Winding Inductance at 20°C (mH)	4.7	3.3	3.43	2.59	6.42
Electrical Time-constant(ms)	7.3	3	3.33	3.2	2.32
Pole Count	4 Pole Pairs	4 Pole Pairs	4 Pole Pairs	4 Pole Pairs	4 Pole Pairs
Insulation Class	F	F	F	F	F
Protection Class	IP65	IP65	IP65	IP65	IP65
Cooling Method	Natural Cooling	Natural Cooling	Natural Cooling	Natural Cooling	Natural Cooling
Motor Mass (kg)	7.2	7.2	8	10.5	7.4
Load Motor Mass (kg)	7.8	7.8	8.6	11.5	8.2
Motor Length Without Load (mm)	263	263	293	293	214
Motor Length With Load (mm)	293	293	323	323	245

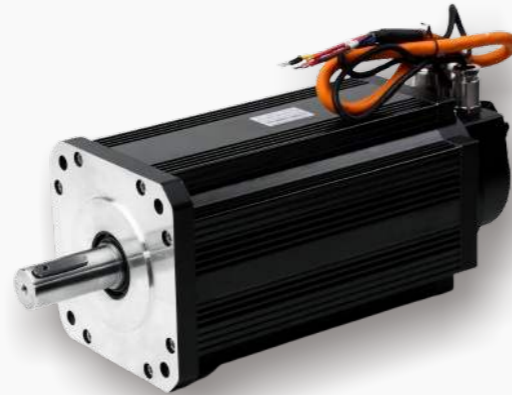
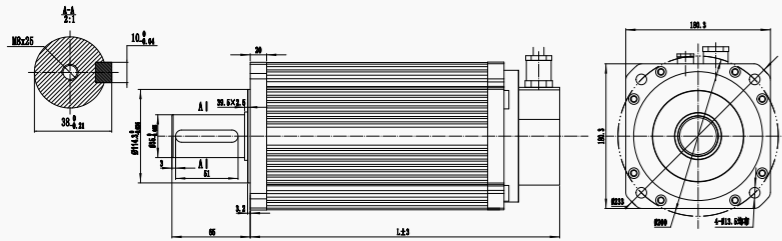
SPECIFICATIONS

MOTER MODEL	130B5ST-05025	130B5ST-06025	130B5ST-07725	130B5ST-10010	130B5ST-10015	130B5ST-10025	130B5ST-15015	130B5ST-15025
Rated Voltage(V)	220	220	220	220	220	220	220	220
Rated Power(kW)	1.3	1.5	2	1	1.5	2.6	2.3	3.8
Rated Speed(rpm)	2500	2500	2500	1000	1500	2500	1500	2500
Maximum speed (rpm)	2800	3000	2800	1500	2000	3000	1800	3000
Rated Torque(N.m)	5	6	7.7	10	10	10	15	15
Peak Torque(N.m)	15	18	22	20	25	25	30	30
Rated Current (A)	5	6	7.5	4.5	6	10	9.5	13.5
Peak Current (A)	15	18	21.5	9	15	25	19	27
Rotor Inertia (kg·m ²)	1.06*10 ⁻³	1.26*10 ⁻³	1.53*10 ⁻³	1.94*10 ⁻³	1.94*10 ⁻³	1.94*10 ⁻³	2.77*10 ⁻³	2.77*10 ⁻³
Winding Resistance at 20°C (Ω)	1.08*10 ⁻³	1.28*10 ⁻³	1.55*10 ⁻³	1.96*10 ⁻³	1.96*10 ⁻³	1.96*10 ⁻³	2.79*10 ⁻³	2.79*10 ⁻³
Torque Coefficient (N.m/A)	1	1	1.03	2.2	1.67	1	1.58	1.11
Back EMF Constant (V/krpm)	68	65	68	140	103	70	114	67
Winding Resistance at 20°C (Ω)	1.84	1.21	1.01	2.7	1.5	0.73	1.1	0.49
Winding Inductance at 20°C (mH)	4.9	3.87	2.94	8.8	4.37	2.45	4.45	1.68
Electrical Time-constant(ms)	2.66	3.26	2.91	3.26	2.91	3.36	4.05	3.43
Pole Count	4 Pole Pairs	4 Pole Pairs	4 Pole Pairs	4 Pole Pairs	4 Pole Pairs	4 Pole Pairs	4 Pole Pairs	4 Pole Pairs
Insulation Class	F	F	F	F	F	F	F	F
Protection Class	IP65	IP65	IP65	IP65	IP65	IP65	IP65	IP65
Cooling Method	Natural Cooling	Natural Cooling	Natural Cooling	Natural Cooling	Natural Cooling	Natural Cooling	Natural Cooling	Natural Cooling
Motor Mass (kg)	7.8	8.2	9	11	11	11	13.6	13.4
Load Motor Mass (kg)	8.6	9	9.8	11.8	11.8	11.8	14.4	14.2
Motor Length Without Load (mm)	219	227	240	261	261	261	289	279
Motor Length With Load (mm)	250	258	271	292	292	292	320	310

SERIES SERVO MOTORS

180B5ST

DIMENSION:UNIT=mm

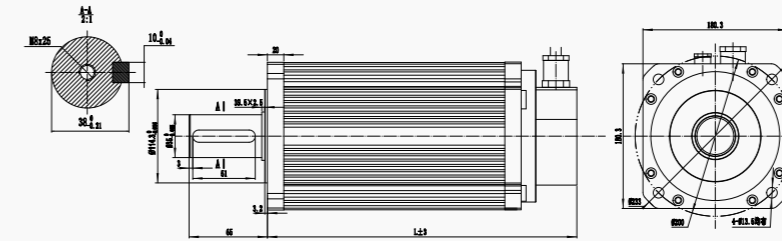


SERIES SERVO MOTORS

180BSST

伺服电机

DIMENSION:UNIT=mm



SPECIFICATIONS

MOTOR MODEL	180B5ST-17215	180B5ST-17215	180B5ST-19015	180B5ST-19015	180B5ST-21520	180B5ST-21520	180B5ST-27010	180B5ST-27010
Rated Voltage(V)	220	380	220	380	220	380	220	380
Rated Power(kW)	2.7	2.7	3	3	4.5	4.5	2.9	2.9
Rated Speed(rpm)	1500	1500	1500	1500	2000	2000	1000	1000
Maximum speed(rpm)	1800	2000	2000	2000	2500	2500	1500	1500
Rated Torque(N.m)	17.2	17.2	19	19	21.5	21.5	27	27
Peak Torque(N.m)	43	43	47	47	53	53	67	67
Rated Current (A)	10.5	6.5	12	7.5	16	9.5	12	7.5
Peak Current (A)	26.3	16.3	30	18.5	40	23.5	30	19
Rotor Inertia (kg·m ²)	6.5*10 ⁻³	6.5*10 ⁻³	7.0*10 ⁻³	7.0*10 ⁻³	7.96*10 ⁻³	7.96*10 ⁻³	9.64*10 ⁻³	9.64*10 ⁻³
Winding Resistance at 20°C (Ω)	6.56*10 ⁻³	6.56*10 ⁻³	7.06*10 ⁻³	7.06*10 ⁻³	8.02*10 ⁻³	8.02*10 ⁻³	9.70*10 ⁻³	9.70*10 ⁻³
Torque Coefficient (N.m/A)	1.64	2.65	1.58	2.5	1.34	2.26	2.25	3.6
Back EMF Constant (V/krpm)	112	167	97	170	84	140	138	224
Winding Resistance at 20°C (Ω)	0.7	1.47	0.4	1.23	0.24	0.71	0.48	1.37
Winding Inductance at 20°C (mH)	3.5	7.8	2.42	7.3	1.45	4	3.26	8.6
Electrical Time-constant (ms)	5	5.3	6	5.93	6	5.6	6.79	6.27
Pole Count	4 Pole Pairs	4 Pole Pairs	4 Pole Pairs	4 Pole Pairs	4 Pole Pairs	4 Pole Pairs	4 Pole Pairs	4 Pole Pairs
Insulation Class	F	F	F	F	F	F	F	F
Protection Class	IP65	IP65	IP65	IP65	IP65	IP65	IP65	IP65
Cooling Method	Natural Cooling	Natural Cooling	Natural Cooling	Natural Cooling	Natural Cooling	Natural Cooling	Natural Cooling	Natural Cooling
Motor Mass (kg)	22.3	22.3	25.2	25.2	27.2	27.2	30	30
Load Motor Mass (kg)	24.1	24.1	27	27	29	29	31.8	31.8
Motor Length Without Load (mm)	253	253	259	259	270	270	289	289
Motor Length With Load (mm)	325	325	331	331	342	342	361	361

SPECIFICATIONS

MOTOR MODEL	180B5ST-27015	180B5ST-27015	180B5ST-35010	180B5ST-35010	180B5ST-35015	180B5ST-35015	180B5ST-48015	180B5ST-48015
Rated Voltage(V)	220	380	220	380	220	380	220	380
Rated Power(kW)	4.3	4.3	3.7	3.7	5.5	5.5	7.5	7.5
Rated Speed(rpm)	1500	1500	1000	1000	1500	1500	1500	1500
Maximum speed(rpm)	2000	2000	1500	1500	2000	2000	2000	2000
Rated Torque(N.m)	27	27	35	35	35	35	48	48
Peak Torque(N.m)	67	67	70	70	70	70	96	96
Rated Current (A)	16	10	16	10	24	12	32	20
Peak Current (A)	40	25	32	20	48	24	64	40
Rotor Inertia (kg·m ²)	9.64*10 ⁻³	9.64*10 ⁻³	12.25*10 ⁻³	12.25*10 ⁻³	12.25*10 ⁻³	12.25*10 ⁻³	16.72*10 ⁻³	16.72*10 ⁻³
Winding Resistance at 20°C (Ω)	9.70*10 ⁻³	9.70*10 ⁻³	12.31*10 ⁻³	12.31*10 ⁻³	12.31*10 ⁻³	12.31*10 ⁻³	16.78*10 ⁻³	16.78*10 ⁻³
Torque Coefficient (N.m/A)	1.69	1.69	2.2	3.5	1.45	2.9	1.5	2.4
Back EMF Constant (V/krpm)	103	103	134	223	90	181	94	156
Winding Resistance at 20°C (Ω)	0.28	0.796	0.31	0.93	0.14	0.62	0.104	0.273
Winding Inductance at 20°C (mH)	1.74	4.83	2.11	5.86	1	4	0.77	2.14
Electrical Time-constant (ms)	6.2	6	6.8	6.3	7.14	6.45	7.4	7.8
Pole Count	4 Pole Pairs	4 Pole Pairs	4 Pole Pairs	4 Pole Pairs	4 Pole Pairs	4 Pole Pairs	4 Pole Pairs	4 Pole Pairs
Insulation Class	F	F	F	F	F	F	F	F
Protection Class	IP65	IP65	IP65	IP65	IP65	IP65	IP65	IP65
Cooling Method	Natural Cooling	Natural Cooling	Natural Cooling	Natural Cooling	Natural Cooling	Natural Cooling	Natural Cooling	Natural Cooling
Motor Mass (kg)	30	30	35.3	35.3	35.3	35.3	44.8	44.8
Load Motor Mass (kg)	31.8	31.8	37.1	37.1	37.1	37.1	46.8	46.8
Motor Length Without Load (mm)	289	289	319	319	319	319	373	373
Motor Length With Load (mm)	361	361	391	391	391	391	445	445